

GfK

GfK GeoMarketing



Digitale Landkarten / Digital maps

Australien / Australia

Digitale Landkarten von GfK GeoMarketing

Die Landkartenedition Australien gehört zu einem der umfangreichsten Landkartenarchive mit der weltweit größten Sammlung an digitalen postalischen und administrativen Landkarten. Es bietet Karten für mehr als 240 Länder weltweit, fertig einsatzbereit für GeoMarketing-Softwares, Geografische Informationssysteme (GIS), Internet- und Intranetapplikationen oder Data Warehouse und CRM-Systeme.

Alle Karten werden von Kartographen und Geoinformatikern mit langjähriger Erfahrung in der Kartenproduktion bei uns im Haus manuell digitalisiert. Das hat den Vorteil, dass alle Länder unseren Qualitätskriterien entsprechen, d.h. alle Karten sind lagegenau und geometrisch 100% fehlerfrei, aneinander grenzende Geometrien zeigen weder Überlappungen noch Lücken. Dies gilt nicht nur für die administrativen und postalischen Gebiete, sondern auch für die topografischen Kartenebenen wie z.B. Straßen und Gewässer. Zudem sind die Tabellenspalten der Karten für alle Länder so angelegt, dass beliebig viele Länder direkt zu einer Karte kombiniert werden können.

Die Bezeichnungen der Gebiete sind für viele Länder sowohl in der Landessprache mit den ländertypischen Schriftzeichen als auch in internationaler Schreibweise (ASCII) enthalten.

Digital maps from GfK GeoMarketing

The Australia Map Edition is part of the world's most comprehensive digital postal and administrative map collection. GfK GeoMarketing provides maps for more than 240 countries, all of which are ready for incorporation into geomarketing software applications, geographic information systems (GIS), internet applications, data warehouses and CRM systems.

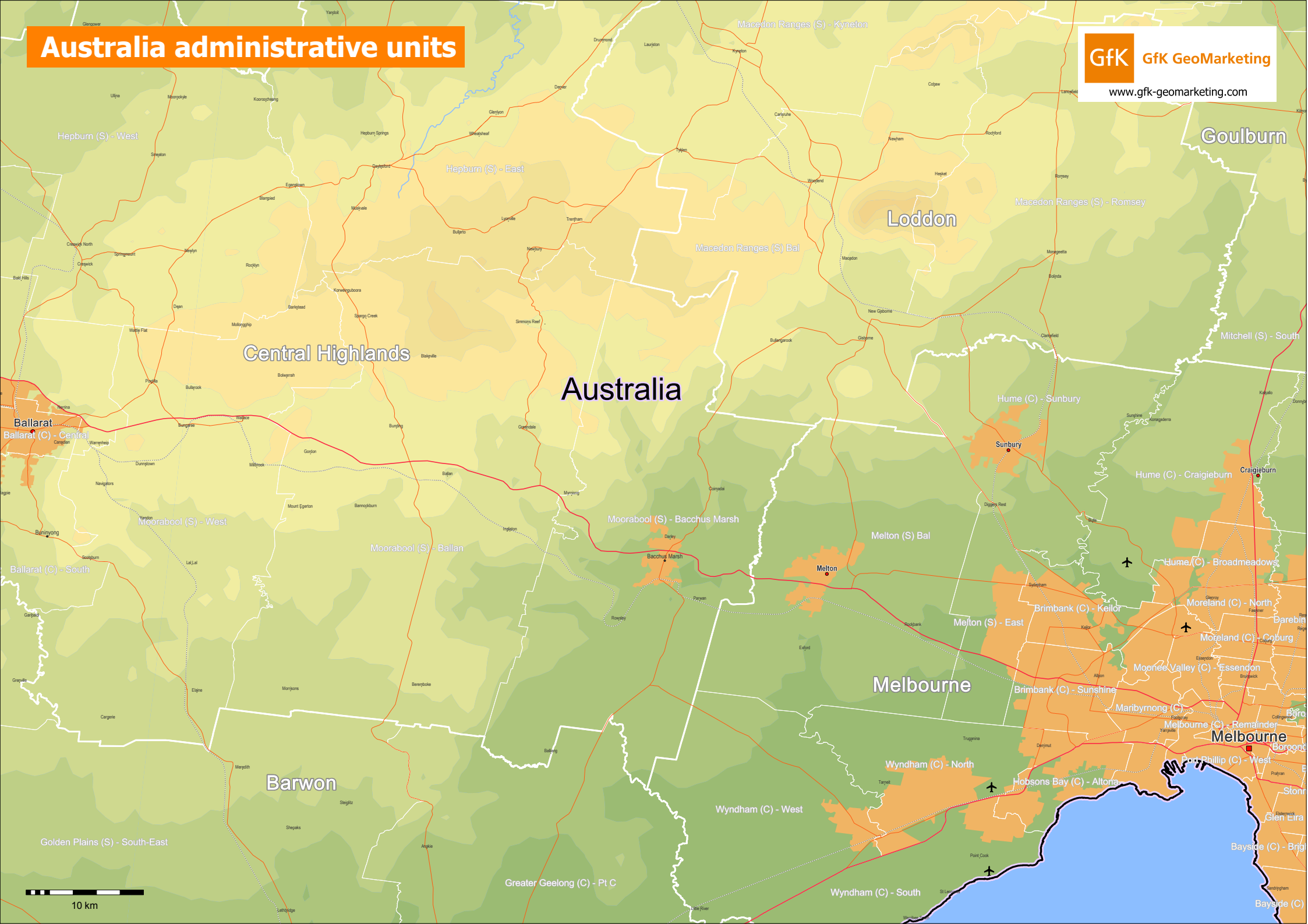
All maps are manually digitized by experienced cartographers and geoinformatics specialists. The resulting high-quality maps are accurate and geometrically 100% error-free, all adjacent geographic areas are free of both gaps and overlaps. This is true not only of the administrative and postcode areas, but also of the topographic map layers, such as those featuring streets and bodies of water. Additionally, the data columns for all of our maps are optimally arranged, allowing you to combine maps from multiple countries within your active workspace.

For many countries, place-name attributions are provided in both the native language (and script) as well as the international format (ASCII).

Quality features of GfK GeoMarketing's digital maps:

- Gap- and overlap-free digitalization
- Vector-based with infinite zoom capability
- Perfect fit with all worldwide maps provided by GfK GeoMarketing
- Regular updates and additions
- Based on geographic coordinates (WGS84)
- Inclusion of English, international or local attributions
- Cross-checked with the latest satellite imagery
- Perfect fit with GfK GeoMarketing's market and purchasing power data

Australia administrative units



Australia postal units

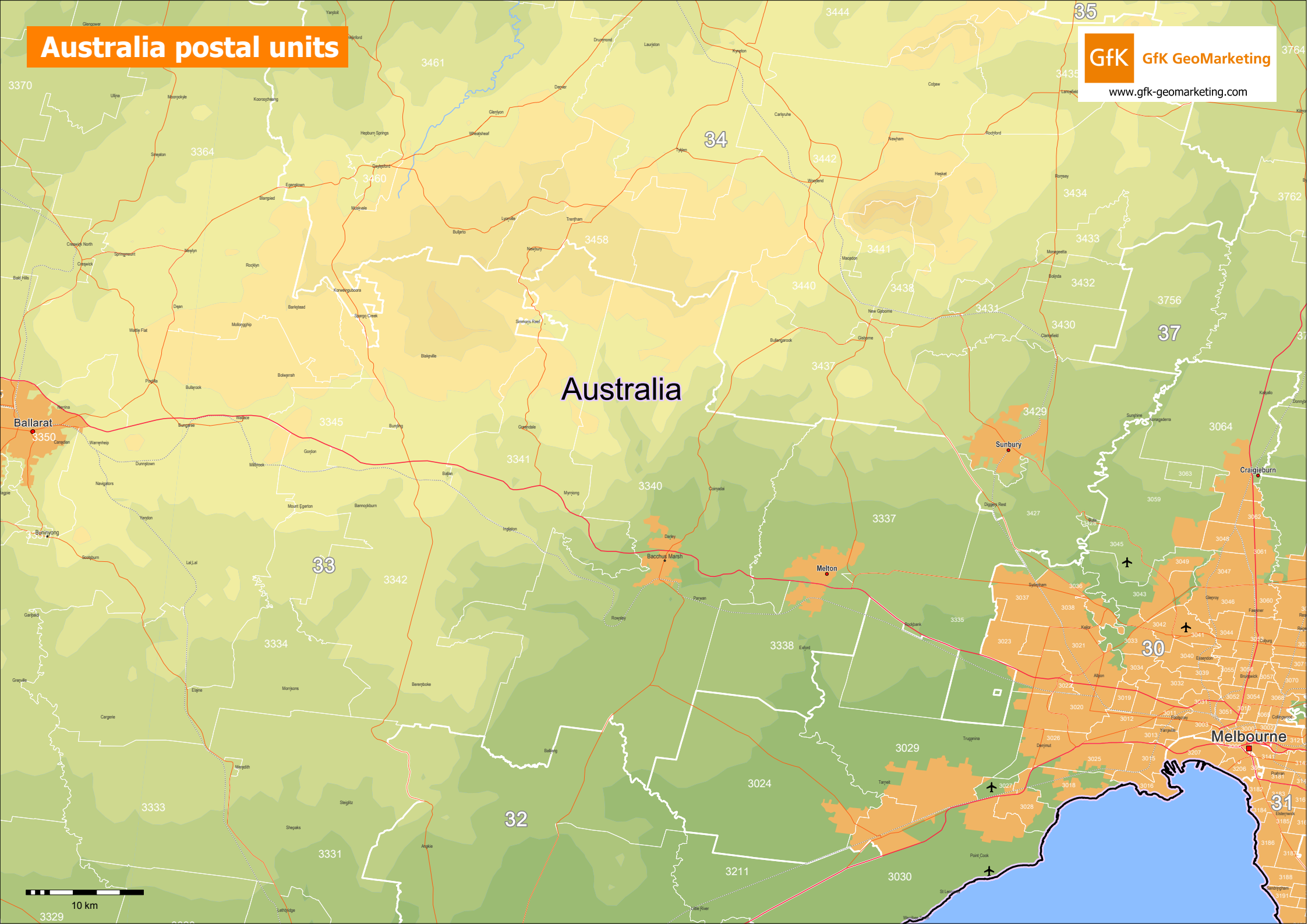
Australia

Ballarat
3350

Sunbury

Melton

Melbourne



Layer-/Filename	Object type*	Type	No. of objects	Off. code**	Nat. lang.***
states and territories Australia 2012	admin (level 1)	polygon	9	✓	
statistical divisions Australia 2012	admin (level 2)	polygon	63	✓	
statistical subdivisions Australia 2012	admin (level 3)	polygon	208	✓	
statistical local areas Australia 2012	admin (level 4)	polygon	1393	✓	
1-digit postcode areas Australia 2012	postal (1-digit)	polygon	7	✓	
2-digit postcode areas Australia 2012	postal (2-digit)	polygon	53	✓	
3-digit postcode areas Australia 2012	postal (3-digit)	polygon	434	✓	
4-digit postcode areas Australia 2012	postal (4-digit)	polygon	2647	✓	
cities over 100,000 Australia	topogr	point	14		
cities 50,-100,000 Australia	topogr	point	14		
cities 20,-50,000 Australia	topogr	point	33		
cities 10,-20,000 Australia	topogr	point	62		
cities under 10,000 Australia	topogr	point	6664		
city areas Australia	topogr	polygon	105		
airports Australia	topogr	point	236		
elevation Australia	topogr	polygon	68838		
hydro lines Australia	topogr	line	160		
hydro areas Australia	topogr	polygon	180		
major roads Australia	topogr	line	221		
minor roads Australia	topogr	line	1328		
railways Australia	topogr	line	145		

Explanation of terms

Object type*:

admin (level 0-5)

This layer depicts the administrative and political boundaries of the country in question. Level "0" corresponds to the country as a whole, with an increasing level of detail for each successive level (e.g., 2, 3 and so on).

postal (1-5 digits)

This layer depicts the postcode divisions of the country in question. "1" refers to one-digit postcodes, "2" to two-digit postcodes, and so on. The higher the number, the more detailed the depiction of the postcode areas.

topogr

This layer depicts topographic features, such as streets, rail networks, waterbodies, elevation levels, forests, areas of occupation, industrial regions, etc.

TA

This layer is based on Tele Atlas cartography.

Off. Code**:

This layer contains labels featuring official regional codes - for example, the official designators of postcodes used by the national postal organization.

Nat. lang.*** :

In addition to ASCII-based labels, this layer contains labels in the language (and associated special characters) of the country in question. For some countries local labels are not properly shown in MapInfo, unless the appropriate font is installed or the system's regional settings have been changed to the country in question.

References

Australian dataset is partially based on ABS data which is used with permission from the Australian Bureau of Statistics <www.abs.gov.au>.

Brazilian dataset is partially based on IBGE data which is used with permission from the Instituto Brasileiro de Geografia e Estatística.

Canadian dataset is partially based on Department of Natural Resources Canada data <www.nrcan.gc.ca>

Democratic Republic of the Congo dataset is partially based on Référentiel Géographique Commun data <www.rgc.cd>

Estonian dataset is partially based on Estonian Land Board data 2008.

Portuguese dataset is partially based on Instituto Geográfico Português data <www.igeo.pt>.

South African dataset is partially based on data of (I) Department of water affairs <www.dwa.gov.za>, (II) Municipal Demarcation Board <www.demarcation.org.za>, (III) National Geospatial Information <www.ngi.gov.za>

Digitale Landkarten für mehr als 240 Länder weltweit

Entdecken Sie das Landkartenangebot von GfK GeoMarketing

Digital maps for more than 240 countries worldwide

Discover GfK GeoMarketing's collection of digital postcode
and administrative maps

Europe

	Admin. level 0	Admin. level 1	Admin. level 2	Admin. level 3	Admin. level 4	Admin. level 5	1-digit postcodes	2-digit postcodes	3-digit postcodes	4-digit postcodes	5-digit postcodes	6-digit postcodes	Transportation	Hydrography	City points	Elevation
Albania	✓	✓	✓	✓			✓		✓				✓	✓	✓	✓
Austria	✓	✓	✓	✓	✓		✓		✓				✓	✓	✓	✓
Belarus	✓	✓	✓	✓			✓	✓				✓	✓	✓	✓	✓
Belgium	✓	✓	✓	✓	✓		✓		✓				✓	✓	✓	✓
Bosnia-Herzegovina	✓	✓	✓	✓			✓				✓		✓	✓	✓	✓
Bulgaria	✓	✓	✓	✓			✓		✓				✓	✓	✓	✓
Croatia	✓	✓	✓				✓				✓		✓	✓	✓	✓
Cyprus	✓	✓	✓				✓		✓				✓	✓	✓	✓
Czech Republic	✓	✓	✓	✓			✓				✓		✓	✓	✓	✓
Denmark ²	✓	✓	✓	✓			✓		✓				✓	✓	✓	✓
Estonia	✓	✓	✓				✓				✓		✓	✓	✓	✓
Finland	✓	✓	✓	✓	✓		✓				✓		✓	✓	✓	✓
France	✓	✓	✓	✓	✓	✓	✓				✓		✓	✓	✓	✓
Germany	✓	✓	✓	✓	✓	✓	✓	✓			✓		✓	✓	✓	✓
Greece	✓	✓	✓	✓	✓	✓	✓				✓		✓	✓	✓	✓
Hungary	✓	✓	✓	✓			✓		✓				✓	✓	✓	✓
Iceland	✓	✓	✓	✓			✓	✓					✓	✓	✓	✓
Ireland	✓	✓	✓	✓									✓	✓	✓	✓
Italy	✓	✓	✓	✓			✓				✓		✓	✓	✓	✓
Kosovo	✓	✓	✓				✓						✓	✓	✓	✓
Latvia	✓	✓	✓	✓			✓		✓				✓	✓	✓	✓
Lithuania	✓	✓	✓				✓				✓		✓	✓	✓	✓
Luxembourg	✓	✓	✓			✓	✓						✓	✓	✓	✓
Macedonia	✓	✓	✓				✓						✓	✓	✓	✓
Malta	✓	✓	✓	✓				✓					✓	✓	✓	✓
Moldova	✓	✓	✓				✓		✓				✓	✓	✓	✓
Montenegro	✓	✓					✓				✓		✓	✓	✓	✓
Netherlands	✓	✓	✓	✓			✓		✓				✓	✓	✓	✓
Norway	✓	✓	✓	✓			✓		✓				✓	✓	✓	✓
Poland	✓	✓	✓	✓	✓		✓				✓		✓	✓	✓	✓
Portugal	✓	✓	✓	✓			✓		✓				✓	✓	✓	✓
Romania	✓	✓	✓				✓					✓	✓	✓	✓	✓
Serbia	✓	✓	✓	✓			✓				✓		✓	✓	✓	✓
Slovakia	✓	✓	✓	✓			✓				✓		✓	✓	✓	✓
Slovenia	✓	✓	✓	✓			✓		✓				✓	✓	✓	✓
Spain	✓	✓	✓	✓			✓				✓		✓	✓	✓	✓
Sweden	✓	✓	✓				✓				✓		✓	✓	✓	✓
Switzerland	✓	✓	✓	✓			✓		✓				✓	✓	✓	✓
Turkey	✓	✓	✓	✓			✓				✓		✓	✓	✓	✓
Ukraine	✓	✓	✓				✓	✓					✓	✓	✓	✓
United Kingdom	✓	✓	✓				✓	✓			✓		✓	✓	✓	✓

City points are categorized by number of inhabitants.

¹ Romania: for larger cities 4-digit postcode areas ; United Kingdom: postcode sectors

³ Denmark includes Faroe Islands and Greenland.

Asia

	Admin. level 0	Admin. level 1	Admin. level 2	Admin. level 3	Admin. level 4	Admin. level 5	1-digit postcodes	2-digit postcodes	3-digit postcodes	4-digit postcodes	5-digit postcodes	6-digit postcodes	Transportation	Hydrography	City points	Elevation
Afghanistan	✓	✓	✓										✓	✓	✓	
Armenia	✓	✓						✓					✓	✓	✓	
Azerbaijan	✓	✓	✓					✓					✓	✓	✓	
Bahrain	✓	✓	✓					✓					✓	✓	✓	
Bangladesh	✓	✓	✓					✓					✓	✓	✓	
Bhutan	✓	✓	✓										✓	✓	✓	
Brunei-Darussalam	✓	✓	✓					✓					✓	✓	✓	
Cambodia	✓	✓	✓						✓				✓	✓	✓	
China	✓	✓	✓					✓	✓	✓			✓	✓	✓	
Georgia	✓	✓	✓					✓					✓	✓	✓	
India	✓	✓	✓					✓				✓	✓	✓	✓	
Indonesia	✓	✓	✓					✓			✓		✓	✓	✓	
Iran	✓	✓	✓					✓					✓	✓	✓	
Iraq	✓	✓	✓					✓					✓	✓	✓	
Israel	✓	✓	✓	✓				✓					✓	✓	✓	
Japan	✓	✓	✓					✓	✓				✓	✓	✓	✓
Jordan	✓	✓	✓					✓					✓	✓	✓	
Kazakhstan	✓	✓	✓					✓		✓			✓	✓	✓	
Korea North	✓	✓	✓										✓	✓	✓	
Korea South	✓	✓	✓						✓				✓	✓	✓	
Kuwait	✓	✓	✓					✓					✓		✓	
Kyrgyzstan	✓	✓	✓						✓	✓			✓	✓	✓	
Laos	✓	✓	✓					✓					✓	✓	✓	
Lebanon	✓	✓	✓					✓					✓	✓	✓	
Malaysia	✓	✓	✓					✓					✓	✓	✓	
Maldives	✓	✓	✓					✓							✓	
Mongolia	✓	✓	✓					✓		✓			✓	✓	✓	
Myanmar	✓	✓	✓					✓					✓	✓	✓	
Nepal	✓	✓	✓	✓		✓			✓				✓	✓	✓	
Oman	✓	✓	✓										✓		✓	
Pakistan	✓	✓	✓										✓	✓	✓	
Papua New Guinea	✓	✓	✓					✓					✓	✓	✓	
Philippines	✓	✓	✓					✓		✓			✓	✓	✓	
Qatar	✓	✓	✓										✓		✓	
Russian Federation	✓	✓	✓	✓				✓					✓	✓	✓	
Saudi Arabia	✓	✓	✓			✓							✓		✓	
Singapore	✓	✓	✓					✓					✓		✓	
Sri Lanka	✓	✓	✓					✓					✓	✓	✓	
Syria	✓	✓	✓										✓	✓	✓	
Taiwan	✓	✓	✓			✓		✓	✓				✓	✓	✓	
Tajikistan	✓	✓	✓						✓	✓			✓	✓	✓	
Thailand	✓	✓	✓					✓					✓	✓	✓	
Timor-Leste	✓	✓	✓										✓	✓	✓	
Turkmenistan	✓	✓	✓						✓				✓	✓	✓	
United Arab Emirates	✓	✓											✓		✓	
Uzbekistan	✓	✓	✓					✓		✓			✓	✓	✓	
Viet Nam	✓	✓	✓					✓					✓	✓	✓	
Yemen	✓	✓	✓										✓		✓	

City points are categorized by number of inhabitants.

Africa

	Admin. level 0	Admin. level 1	Admin. level 2	Admin. level 3	Admin. level 4	Admin. level 5	1-digit postcodes	2-digit postcodes	3-digit postcodes	4-digit postcodes	5-digit postcodes	6-digit postcodes	Transportation	Hydrography	City points	Elevation
Algeria	✓	✓											✓	✓	✓	
Angola	✓	✓	✓										✓	✓	✓	
Benin	✓	✓	✓										✓	✓	✓	
Botswana	✓	✓	✓										✓	✓	✓	
Burkina Faso	✓	✓	✓										✓	✓	✓	
Burundi	✓	✓	✓										✓	✓	✓	
Cameroon	✓	✓	✓										✓	✓	✓	
Cape Verde	✓	✓	✓				✓								✓	
Central African Rep.	✓	✓	✓										✓	✓	✓	
Chad	✓	✓	✓										✓	✓	✓	
Comoros	✓	✓											✓	✓	✓	
Congo	✓	✓											✓	✓	✓	
Democratic Rep. of Congo	✓	✓	✓	✓									✓	✓	✓	
Djibouti	✓	✓											✓	✓	✓	
Egypt	✓	✓	✓				✓						✓	✓	✓	
Equatorial-Guinea	✓	✓	✓										✓	✓	✓	
Eritrea	✓	✓	✓										✓	✓	✓	
Ethiopia	✓	✓	✓										✓	✓	✓	
Gabon	✓	✓	✓										✓	✓	✓	
Gambia	✓	✓	✓										✓	✓	✓	
Ghana	✓	✓	✓										✓	✓	✓	
Guinea	✓	✓	✓										✓	✓	✓	
Guinea-Bissau	✓	✓	✓										✓	✓	✓	
Ivory Coast	✓	✓	✓										✓	✓	✓	
Kenya	✓	✓	✓			✓		✓					✓	✓	✓	
Lesotho	✓	✓											✓	✓	✓	
Liberia	✓	✓	✓										✓	✓	✓	
Libya	✓	✓											✓	✓	✓	
Madagascar	✓	✓	✓			✓							✓	✓	✓	
Malawi	✓	✓	✓										✓	✓	✓	
Mali	✓	✓	✓										✓	✓	✓	
Mauritania	✓	✓	✓										✓	✓	✓	
Mauritius	✓	✓											✓	✓	✓	
Mayotte	✓	✓									✓		✓		✓	
Morocco	✓	✓	✓			✓	✓						✓	✓	✓	
Mozambique	✓	✓	✓				✓						✓	✓	✓	
Namibia	✓	✓											✓	✓	✓	
Niger	✓	✓	✓										✓	✓	✓	
Nigeria	✓	✓	✓				✓						✓	✓	✓	
Reunion	✓	✓	✓								✓		✓		✓	
Rwanda	✓	✓	✓										✓	✓	✓	
Sao Tome and Principe	✓	✓	✓										✓		✓	
Senegal	✓	✓	✓										✓	✓	✓	
Seychelles	✓	✓											✓		✓	
Sierra Leone	✓	✓	✓										✓	✓	✓	
Somalia	✓	✓	✓										✓	✓	✓	
South Africa	✓	✓	✓	✓			✓		✓				✓	✓	✓	
Sudan	✓	✓	✓										✓	✓	✓	
Swaziland	✓	✓	✓							✓			✓	✓	✓	
Tanzania	✓	✓	✓										✓	✓	✓	
Togo	✓	✓	✓										✓	✓	✓	
Tunisia	✓	✓	✓				✓						✓	✓	✓	
Uganda	✓	✓	✓										✓	✓	✓	
Western Sahara	✓	✓	✓			✓	✓						✓	✓	✓	
Zambia	✓	✓	✓				✓						✓	✓	✓	
Zimbabwe	✓	✓	✓										✓	✓	✓	

City points are categorized by number of inhabitants

America

	Admin. level 0	Admin. level 1	Admin. level 2	Admin. level 3	Admin. level 4	Admin. level 5	1-digit postcodes	2-digit postcodes	3-digit postcodes	4-digit postcodes	5-digit postcodes	6-digit postcodes	Transportation	Hydrography	City points	Elevation
Anguilla	✓	✓											✓	✓	✓	
Antigua and Barbuda	✓	✓											✓		✓	
Argentina	✓	✓	✓				✓						✓	✓	✓	
Aruba	✓	✓											✓	✓	✓	
Bahamas	✓	✓											✓	✓	✓	
Barbados	✓	✓											✓		✓	
Belize	✓	✓	✓										✓	✓	✓	
Bermuda	✓	✓						✓					✓		✓	
Bolivia	✓	✓	✓	✓									✓	✓	✓	
Brazil	✓	✓	✓	✓	✓		✓						✓	✓	✓	
British Virgin Islands	✓	✓											✓	✓	✓	
Canada	✓	✓							✓				✓	✓	✓	
Cayman Islands	✓	✓				✓							✓		✓	
Chile	✓	✓	✓	✓		✓		✓					✓	✓	✓	
Colombia	✓	✓	✓				✓						✓	✓	✓	
Costa Rica	✓	✓	✓	✓				✓			✓		✓	✓	✓	
Cuba	✓	✓	✓					✓					✓	✓	✓	
Dominica	✓	✓											✓	✓	✓	
Dominican Republic	✓	✓	✓				✓						✓	✓	✓	
Ecuador	✓	✓	✓				✓			✓			✓	✓	✓	
El Salvador	✓	✓	✓										✓	✓	✓	
Falkland Islands	✓	✓										✓ ¹	✓		✓	
French Guiana	✓	✓	✓	✓							✓		✓	✓	✓	
Grenada	✓	✓											✓	✓	✓	
Guadeloupe	✓	✓	✓	✓							✓		✓	✓	✓	
Guatemala	✓	✓	✓				✓						✓	✓	✓	
Guyana	✓	✓	✓								✓		✓	✓	✓	
Haiti	✓	✓	✓				✓						✓	✓	✓	
Honduras	✓	✓	✓										✓	✓	✓	
Jamaica	✓	✓	✓			✓		✓					✓	✓	✓	
Martinique	✓	✓	✓	✓							✓		✓	✓	✓	
Mexico	✓	✓	✓				✓						✓	✓	✓	
Montserrat	✓	✓											✓	✓	✓	
Netherlands Antilles	✓	✓											✓	✓	✓	
Nicaragua	✓	✓	✓										✓	✓	✓	
Panama	✓	✓	✓										✓	✓	✓	
Paraguay	✓	✓	✓				✓						✓	✓	✓	
Peru	✓	✓	✓										✓	✓	✓	
Puerto Rico	✓	✓	✓					✓			✓		✓	✓	✓	
Saint Barthelemy	✓	✓									✓		✓		✓	
Saint Kitts and Nevis	✓	✓											✓		✓	
Saint Lucia	✓	✓											✓	✓	✓	
Saint Martin	✓	✓									✓		✓		✓	
St.Vincent & Grenadines	✓	✓				✓							✓		✓	
South Georgia	✓	✓										✓ ¹			✓	
Suriname	✓	✓	✓										✓	✓	✓	
Trinidad and Tobago	✓	✓											✓	✓	✓	
Turks and Caicos	✓	✓	✓										✓	✓	✓	
Uruguay	✓	✓	✓				✓						✓	✓	✓	
USA	✓	✓	✓				✓				✓		✓	✓	✓	
Venezuela	✓	✓	✓				✓						✓	✓	✓	
US Virgin Islands	✓	✓	✓								✓		✓	✓	✓	

¹ Falklands & South Georgia: 7digit postcode

City points are categorized by number of inhabitants

Australia

Australia	<	Admin. level 0
	<	Admin. level 1
	<	Admin. level 2
	<	Admin. level 3
	<	Admin. level 4
	<	Admin. level 5
	<	1-digit postcodes
	<	2-digit postcodes
	<	3-digit postcodes
	<	4-digit postcodes
	<	5-digit postcodes
	<	6-digit postcodes
	<	Transportation
	<	Hydrography
	<	City points
	<	Elevation
New Zealand	<	

City points are categorized by number of inhabitants

Bestellformular / Order form

Produktname / Product name	Preis / Price	Anzahl / Quantity	Gesamtpreis / Total price
<input type="text"/>	€ <input type="text"/>	<input type="text"/>	€ <input type="text"/>
<input type="text"/>	€ <input type="text"/>	<input type="text"/>	€ <input type="text"/>
<input type="text"/>	€ <input type="text"/>	<input type="text"/>	€ <input type="text"/>
<input type="text"/>	€ <input type="text"/>	<input type="text"/>	€ <input type="text"/>

Dateiformat / Data format:

- ESRI ArcGIS (*.shp)
 RegioGraph (*.lay)
 MapInfo (*.tab)
 Oracle
 GeoDatabase (*.gdb)

Landkarten-Abonnement / Map subscription

Sie bestellen digitale Landkarten als Abonnement. Neue Versionen der bestellten Produkte gehen Ihnen in den kommenden Jahren unaufgefordert ohne gesonderte Rechnung zu. In der Regel erhalten Sie jährlich durchschnittlich maximal ein Update. Der günstige Update-Preis gilt für Sie schon ab der ersten Lieferung. Die jährliche Rechnung bezieht sich auf den Updatepreis von **50% des Neupreises** der zu diesem Zeitpunkt gültigen Preisliste von GfK GeoMarketing. Das Abonnement hat eine Mindestlaufzeit von 36 Monaten. Das Abonnement verlängert sich automatisch um jeweils ein Jahr, wenn nicht bis 3 Monate vor Ablauf des Vertrags gekündigt wird.

You are ordering digital maps as part of a subscription. New versions of the ordered products will be sent to you automatically in the coming years without separate invoice. Normally you'll receive an average of at most one update per year. The discounted update price already applies to the first delivery. The annual invoice is charged at the update price – i.e., **50% of the full price** according to the GfK GeoMarketing price list that applies at the time. The contract has a minimum duration of 36 months. The subscription automatically renews for an additional year at the end of each contract period unless three months' notice is given prior to this point.

Alle Preise gelten für Einzelbenutzer-(Inhouse-) Lizenzen. Es gelten die Lizenzbedingungen und AGB von GfK GeoMarketing. Diese können Sie im Internet unter www.gfk-geomarketing.de/lizenzen einsehen. Die Preise verstehen sich zuzüglich gesetzlicher Mehrwertsteuer und Versand.
 All prices are for single-user, in-house licenses. The general terms and conditions and licensing regulations of GfK GeoMarketing apply. These are detailed at www.gfk-geomarketing.com/licenses. All prices exclude VAT and shipping. For delivery in Germany, VAT will be added. For delivery in the EU, please quote your VAT number.

Bitte liefern Sie an / Please deliver to:

<input type="text"/>	<input type="text"/>
Firma / Company	Abteilung / Department
<input type="text"/>	<input type="text"/>
Vorname / First name	Name / Surname
<input type="text"/>	<input type="text"/>
Straße / Street	PLZ, Ort, Land / Postcode, City, Country
<input type="text"/>	<input type="text"/>
Telefon / Phone	FAX / Fax
<input type="text"/>	<input type="text"/>
E-Mail / E-mail	VAT number
<input type="text"/>	<input type="text"/>
Datum / Date	Unterschrift / Signature
<input type="text"/>	<input type="text"/>
Zahlungskonditionen / Terms & conditions:	<input type="checkbox"/> UPS Nachnahme / Payment in advance <input type="checkbox"/> UPS / Rechnung / Invoice (Großfirmen / Institutionen) / (Large companies / institutions) <input type="checkbox"/> Expresslieferung / Express delivery